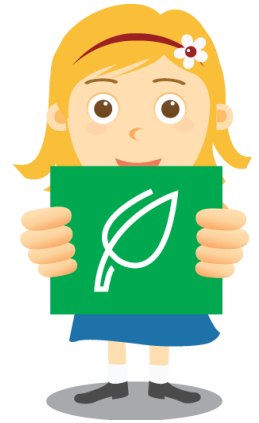


Biodiversity Snapshot

Focusing on indigenous plants and animals



Education

- Student projects
- Animals or plants in classrooms
- Signs eg. nature trails, plant name tags
- Posters about plants and animals
- Campaigns about plants and animals
- Events eg. National Tree Day

Types of Gardens

- Indigenous or native garden
- Drought tolerant garden
- Rain garden
- Wetland
- Vegetable garden
- Indigenous food garden (“bush tucker”)
- Fruit trees
- Ovals

Protection of Gardens

- Fencing around gardens
- Special paths through gardens
- Weed control eg. pulling out weeds
- Mulch on gardens

Types of Plants

- Indigenous or native trees
- Habitat trees that have hollows (holes)
- Native grasses
- Native ferns
- Native moss and lichen
- Other native plants

Animal Homes

- Nesting box
- Big rocks
- Logs
- Pond / wetland / frog bog
- Bird bath

Propagation (growing plants)

- We grow our plants from seeds
- We have a greenhouse to grow plants

Litter

- Litter on the ground
- Rubbish Free / Nude Food lunches
- Reusable drink bottles
- People picking up litter (not punishment)
- Outside bins have lids
- Canteen helps us reduce litter

Soil

- Compost bins or worm farms help build soil
- Erosion (the soil is being washed away)

Watering

- Water from taps used to water gardens eg. buckets under bubbler taps
- Water tanks are used to water gardens
- Plants don't need much water to survive
- We use drip irrigation instead of sprinklers

Other things and notes...

Energy Snapshot

Focusing on electricity, gas and transport



Education

- Signs eg. in classrooms to switch off lights
- Posters about energy
- Student projects
- Energy campaigns eg. 'Switch Off'
- Energy events eg. Earth Hour

Computers and Electronic Equipment

- Computers, screens, laptops, tablets go to sleep or turned off when not in use
- Projectors and interactive whiteboards
- Photocopiers / printers on 'eco mode'
- Sleep, standby, shutdown systems
- 4 or 5 star rated dishwashers, washing machines, fridges etc.

Green Power

- Solar panels
- Solar hot water
- Solar powered equipment eg. water pumps
- Wind turbine

Transport

- Bike shed
- Safe road crossing for pedestrians
- Public transport stop near school

Carbon Offset

- Tree planting at school or local area
- Indigenous or native trees

Lighting

- Natural lighting
- Sensor lights
- Lights turned off / left on
- Timers
- Energy efficient light bulbs
- Light fittings with mirrors / reflectors
- Clean light fittings
- Delamping
(bulbs taken out when they're not needed)
- Sky lights
- Blinds
- Tree shade

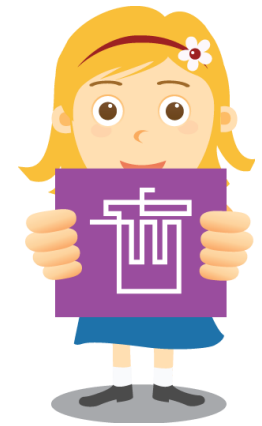
Heating and Cooling

- Air-conditioners and heaters
- Ceiling fans
- Timers
- Hot rooms / cold rooms
- Thermometers
- Hot water heating
- Windows and doors used to cool / heat rooms naturally
- Tree shade
- Double glazed windows
- Draft proofing

Other things and notes...

Waste Snapshot

Focusing on rubbish, litter, recycling, food, paper and reusing



Education

- Signs eg. on bins to say what should go in
- Posters about waste
- Student projects
- Campaigns about waste
- Events eg. Clean Up Schools Day

Organic Waste (food and garden waste)

- Compost bins / worm farms
- Bokashi bins
- Chickens and animals
- Organic waste used as a fertilizer
- Garden waste is composted
- Tree branches are chipped/mulched

Paper

- Electronic newsletters eg. on website
- Electronic bulletins and memos
- Interactive whiteboards reduce paper
- Electronic reports and assignments
- Paper recycling bins
- Paper re-use bins
(for when only one side of paper is used)
- Paper made from recycled paper
- Double sided printing or photocopying

Electronics

- Print cartridge recycling / refilling
- Computers and tablets recycling
- Mobile phone recycling

Litter

- Litter on the ground
- Rubbish Free / Nude Food lunches
- Reusable drink bottles
- People picking up litter (not punishment)
- Outside bins have lids
- Canteen helps us reduce litter

Co-mingled Recycling (like council bins)

- Co-mingled recycling bins for paper, cans, glass etc.

Reusing

- Furniture and equipment being reused
- Newspaper being reused
- Things from home being collected and reused eg. containers for art projects

Donating to Others

- Used furniture given to charity
- Books and stationery given to charity
- Used clothing given to charity
- Vegetables from garden given to charity

Other things and notes...

Water Snapshot

Focusing on reducing water and looking after waterways



Education

- Signs eg. in bathrooms, in kitchens
- Posters about water
- Student projects
- Campaigns about water
- Events eg. National Water Week

Bathrooms

- Leaking taps
- Special taps that reduce the flow of water
- Tap timers or auto shut off taps
- Water pressure
- Dual flush toilets (with two buttons)
- Toilets being flushed by water tanks
- Waterless or composting urinals

Kitchen

- Leaking taps
- Special taps that reduce the flow of water
- Tap timers or auto shut off taps
- Water pressure
- Dishwasher has a high Water Star Rating
- Toilets being flushed by water tanks
- Waterless or composting urinals

Classrooms

- Leaking taps
- Special systems to reduce water
eg. buckets for paintbrushes in art room

Caring for Water Ways

- Litter around the yard
- Storm water drains are blocked with litter or leaves
- Litter around the outside of the school fence
- Wetland / pond / frog bog
- We help look after rivers, lakes, ocean in local community eg. monitoring levels

Collecting Water

- Water tanks
- Buckets under bubbler taps to collect water eg. to put on garden

Garden

- Plants don't need much water eg. cactus
- Indigenous or native gardens
- Tank water used to water garden
- We use compost and mulch
- Drip irrigation instead of sprinklers

Other things and notes...